



# ROCKBlue

## Quarterly Newsletter

October - December 2025

Strengthening Utilities, Strengthening Communities



---

### Q4 Highlights

Q4 was a defining quarter for ROCKBlue, marked by major achievements in performance improvement, leadership development, strengthened partnerships, and organisational transformation. This progress reflects disciplined execution, stronger leadership practices, and deepening collaboration with utilities and partners, reinforcing our ability to drive sustainable improvement across the water and sanitation sector.

---

### 23rd Performance Achievement Workshop Series (PAWS)

Our 23rd quarterly PAWS, co led with the American Water Works Association (AWWA) and Lusaka Water Supply and Sanitation Company (LWSC), was a major success. Delegates engaged in practical learning through hands on sessions operational facility tours, and expert led discussions focused on Non-Revenue Water (NRW) reduction, Asset Management, and financing readiness for utilities.

The programme fostered peer learning and direct exchange between utility leaders, reinforcing practical approaches that strengthen performance, improve financial sustainability, and support long-term service delivery outcomes.

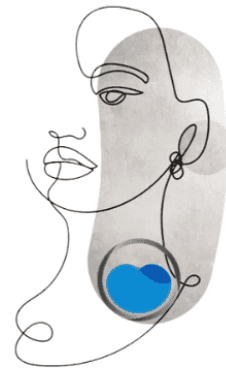


---

## WULUW: Group D Cohort Completed

Our Women's Urban Leadership in Utility WASH (WULUW) programme celebrated the successful completion of its Group D Cohort of mentees. Through structured mentoring, leadership development, and practical exposure, participants strengthened the skills and confidence required to navigate complex utility environments

As these young professionals enter the workforce, they are better equipped to contribute meaningfully to their organisations, support effective service delivery, and build inclusive leadership pathways that strengthen utilities and the communities they serve across Africa.



---

## Strengthening LWSC's Network Monitoring

Thanks to the European Investment Bank (EIB) and internationally recognised NRW expert Ronnie McKenzie, ROCKBlue continued its support to LWSC's network monitoring programme, helping the utility improve efficiency, reduce losses, and strengthen operational performance



---

## Supporting Utilities Toward 2025 Goals

As 2025 comes to a close, ROCKBlue is supporting partner utilities with final steps toward achieving their annual goals. At the same time, we are laying the foundation for 2026 through the use of Performance Tracking Forms that clarify priorities, align leadership teams, and strengthen accountability. This process ensures that each utility enters the new year with a focused plan, clear performance measures, and a shared understanding of what success looks like.



---

## Fundraising Campaign Progress

Our only fundraising campaign of the year, Hope Flows Here, is underway, and by early December we have already achieved 70% of our target. These resources are critical to sustaining our support to utilities, strengthening leadership and performance, and expanding our reach in 2026.

Every contribution directly enables long term improvements in water and sanitation services. Thank you for standing with us and helping ensure that hope continues to flow. Learn more or support the campaign at: [www.rockblue.org/donate/](http://www.rockblue.org/donate/)



---

## ACORN Expanded to CapEx + OpEx

ACORN (Access to Capital, Oversight and Reporting Nexus) expanded its scope this quarter. What began as a programme focused only on investments (CAPEX) is now offering operational and maintenance expenditure (OPEX) financing guidance as well, making ROCKBlue one of the few organisations supporting utilities across the full financing spectrum.

# ACORN

Access to Capital, Oversight and Reporting Nexus

---

## Partnership Discussions with Global Water Intelligence

ROCKBlue is currently in discussions with Global Water Intelligence (GWI) to support their [300 Water Leaders Group](#), a global network of senior water sector chief executives. This collaboration would create opportunities for shared learning, peer exchange, and high-level engagement, enabling African utility leaders, including ROCKBlue partner utilities, to connect with global counterparts and contribute meaningfully to international sector leadership conversations.



---

## Organisational Transformation: Becoming an Enterprise Nonprofit

Q4 marked the most significant organisational restructuring in ROCKBlue's history. By shifting toward an enterprise nonprofit model (one that increases earned income and diversifies revenue) we are strengthening long-term sustainability and enabling deeper, more scalable partnerships with utilities and impact.

ROCKBlue continues to evolve as a trusted, high-performing organisation. This quarter, we welcomed even more outstanding Board Members, each bringing world-class experience in water, finance, and strategic management (check out the team page on our website: <https://www.rockblue.org/our-team/>).

### Rosemary Rop

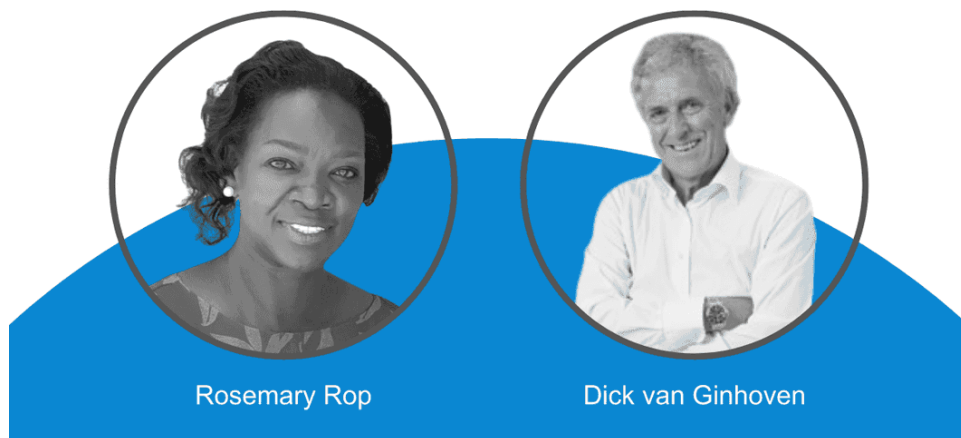
Board member Rosemary has long been a dedicated force in the water-and-sanitation sector, with a strong focus on social accountability and community engagement. Her work, including in her role with WSP / The World Bank, has helped highlight the importance of public participation, transparency, and local empowerment in water and sanitation planning and delivery. Rosemary's commitment to ensuring that water services truly reach underserved communities reflects our shared values of equity, social responsibility, and sustainable development.

## Dick van Ginhoven

Board member Dick van Ginhoven brings decades of high-level expertise in water and sanitation policy and utility reform. As a senior advisor at the Netherlands Ministry of Foreign Affairs, he has worked extensively on transforming water utilities advocating for business-like management, financial autonomy, accountability, and institutional reform to support long-term sustainability. His contributions emphasise that improving water infrastructure isn't just about pouring concrete, but also about building robust institutions, efficient utilities, and governance that prioritise access for vulnerable populations.

Together, Rosemary's grassroots focus on social accountability and Dick's strategic, systems-oriented approach underscore the dual importance of community voice and institutional strength in ensuring water and sanitation services work effectively. Their combined contributions exemplify forward-thinking leadership in the sector — something we are proud to highlight this quarter.

These senior-level additions further strengthen our governance, ensuring ROCKBlue continues to scale responsibly and sustainably.



Rosemary Rop

Dick van Ginhoven

---

## Looking Ahead to 2026

With new programmes, strengthened partnerships, and a reinvigorated organisational structure, ROCKBlue enters 2026 with increased focus and capability. Our work remains grounded in strengthening leadership, improving performance, and supporting utilities to deliver reliable and dignified services. Together with our partners and supporters, we are advancing more resilient urban water and sanitation systems across Africa, one utility at a time. Thank you for your continued support. Learn more or contribute at: [www.rockblue.org/donate/](http://www.rockblue.org/donate/)

---

Wishing you and your family a joyous and safe festive season.

Hope flows here.

Warm regards,

The **ROCKBlue** Team

Donate Today

---



ROCKBlue is a U.S. nonprofit, tax-exempt charitable organization under Section 501(c)(3) of the Internal Revenue Code and a nonprofit registered in South Africa.

EIN 46-5641849



Copyright © 2025 • ROCKBlue. All Rights Reserved.